

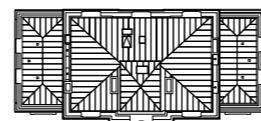
BÂTIMENT HENRI IV

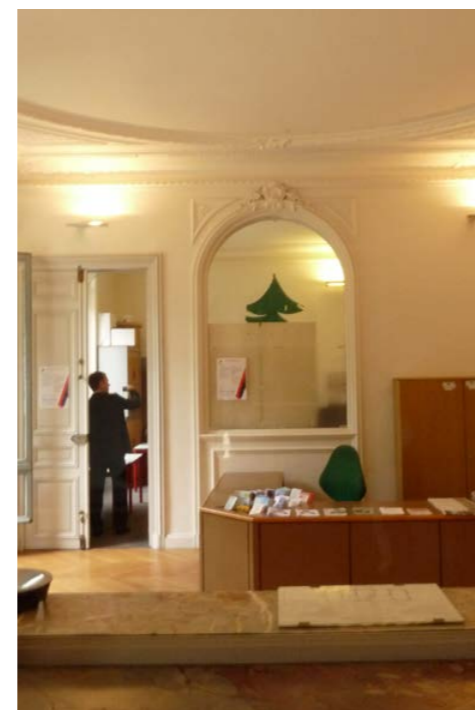
HISTOIRE D'UN PROJET

INAUGURATION 30 MAI 2018

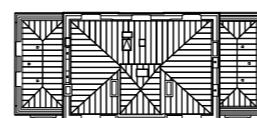


EXISTANT



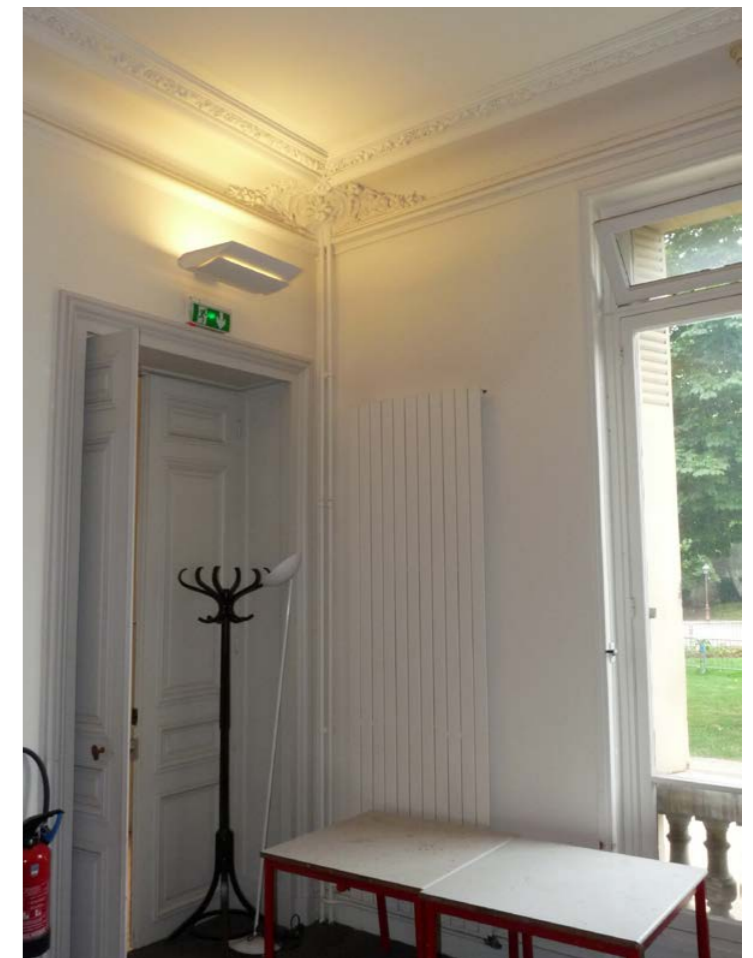


RÉAMÉNAGEMENT DU BÂTIMENT HENRI IV
SAINT GERMAIN EN LAYE
ATELIER FILIPPINI



PHOTOS

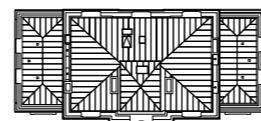
EXISTANT

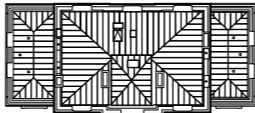
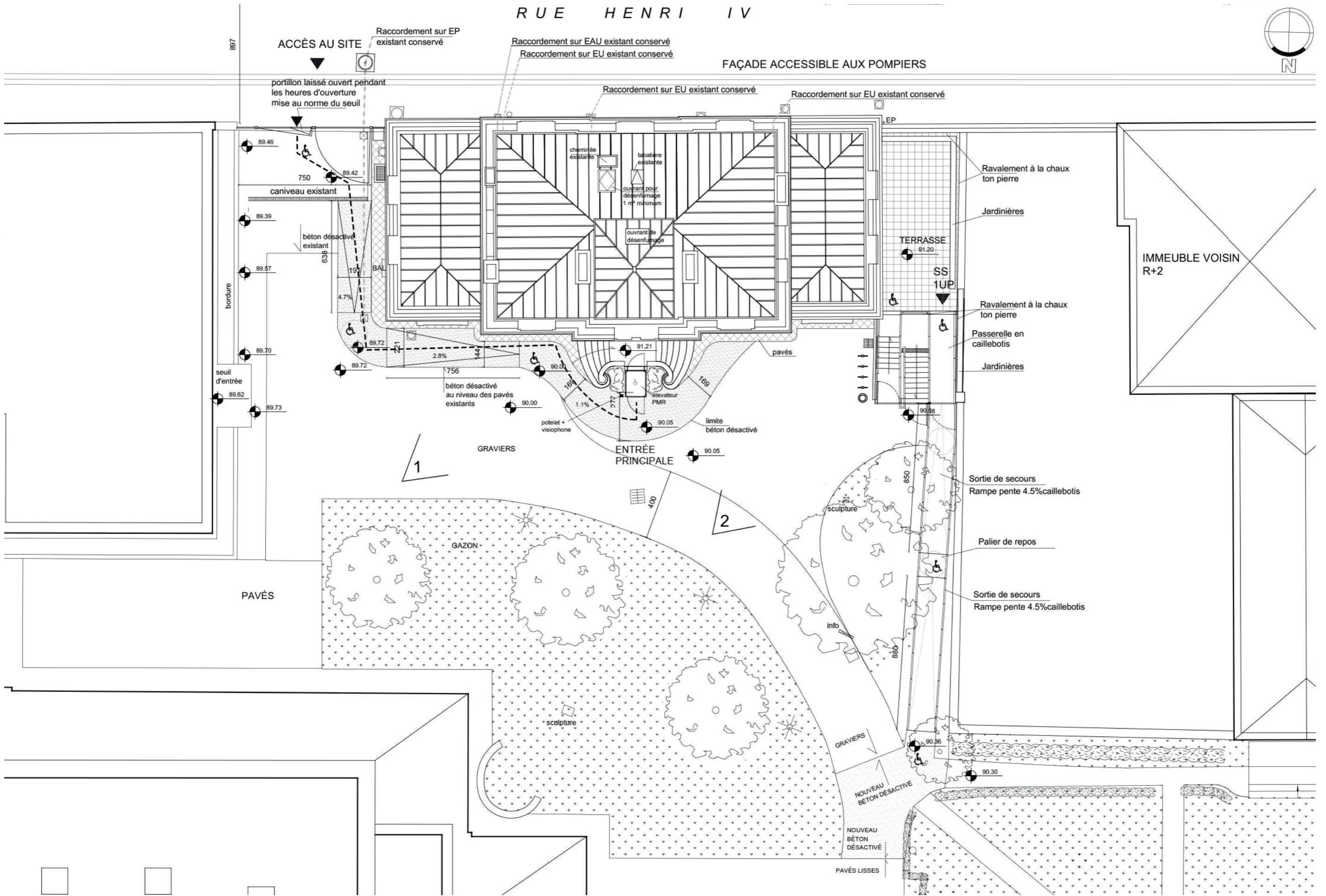


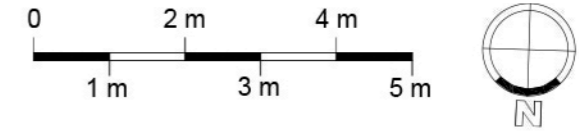
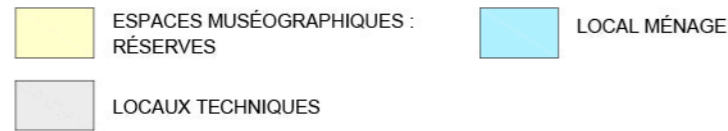




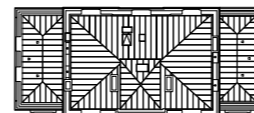
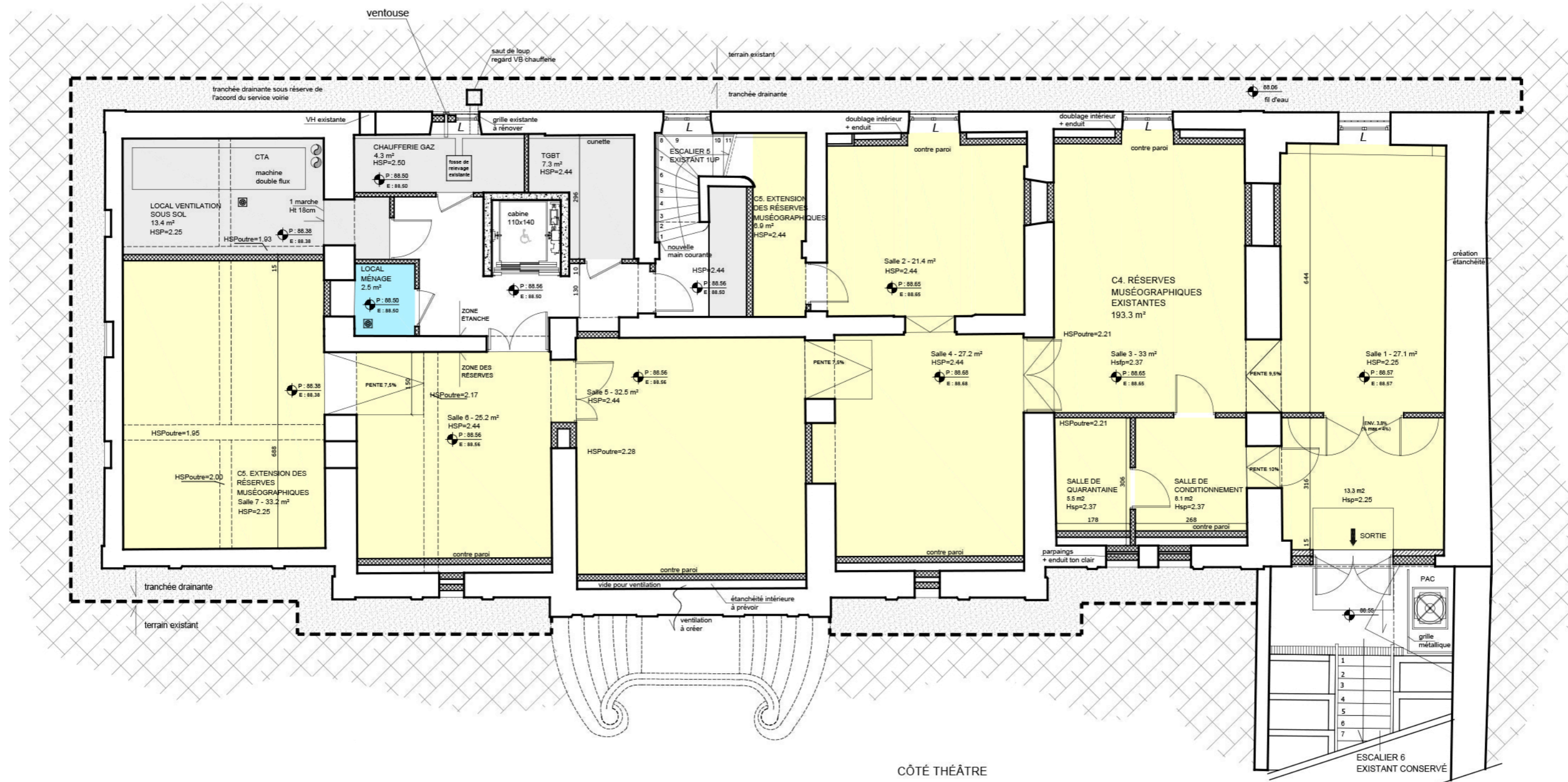
PROJET



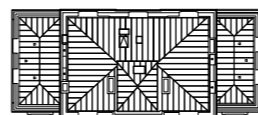
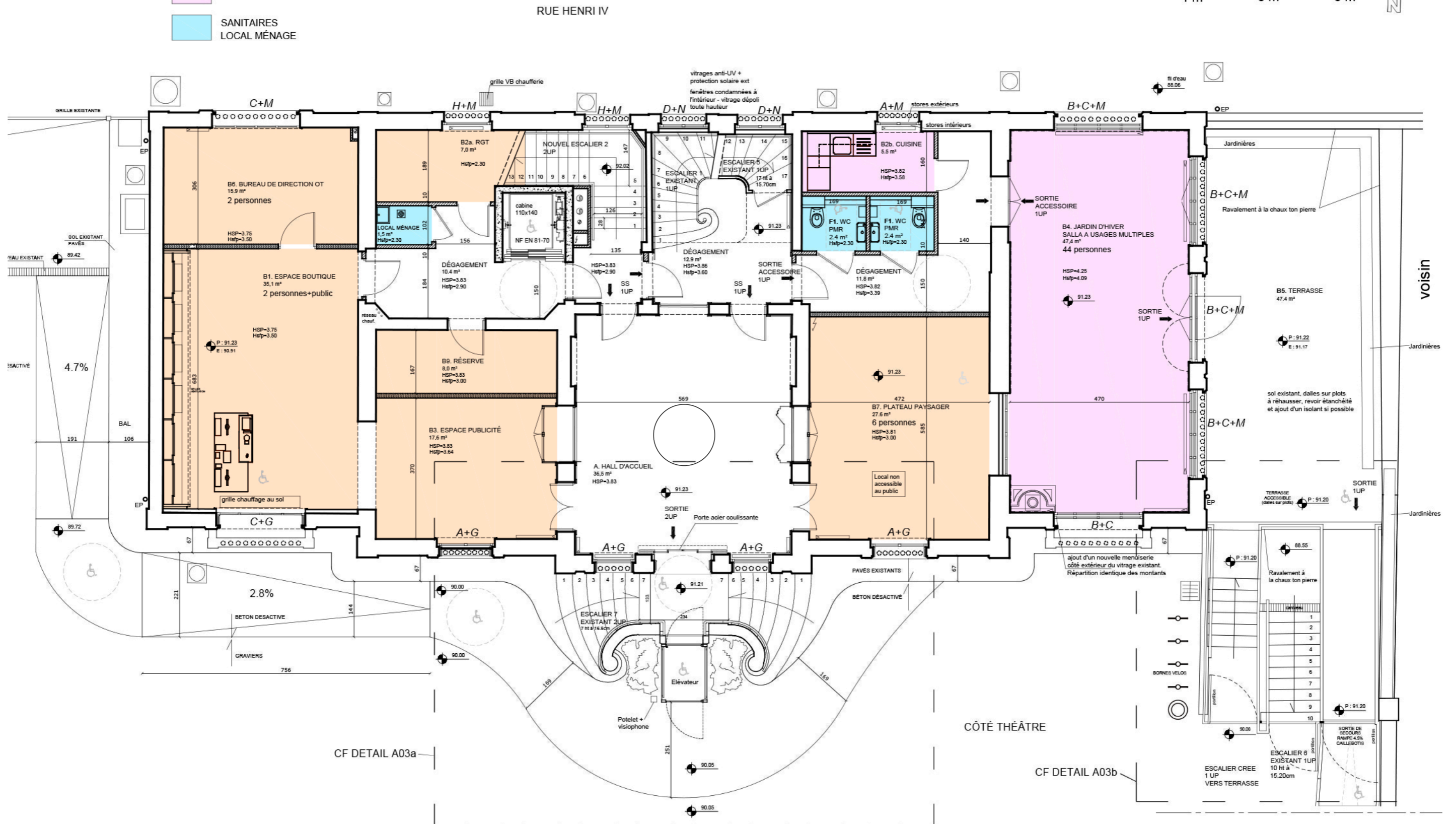
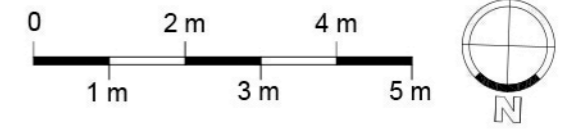




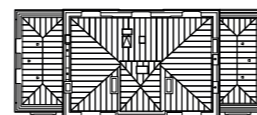
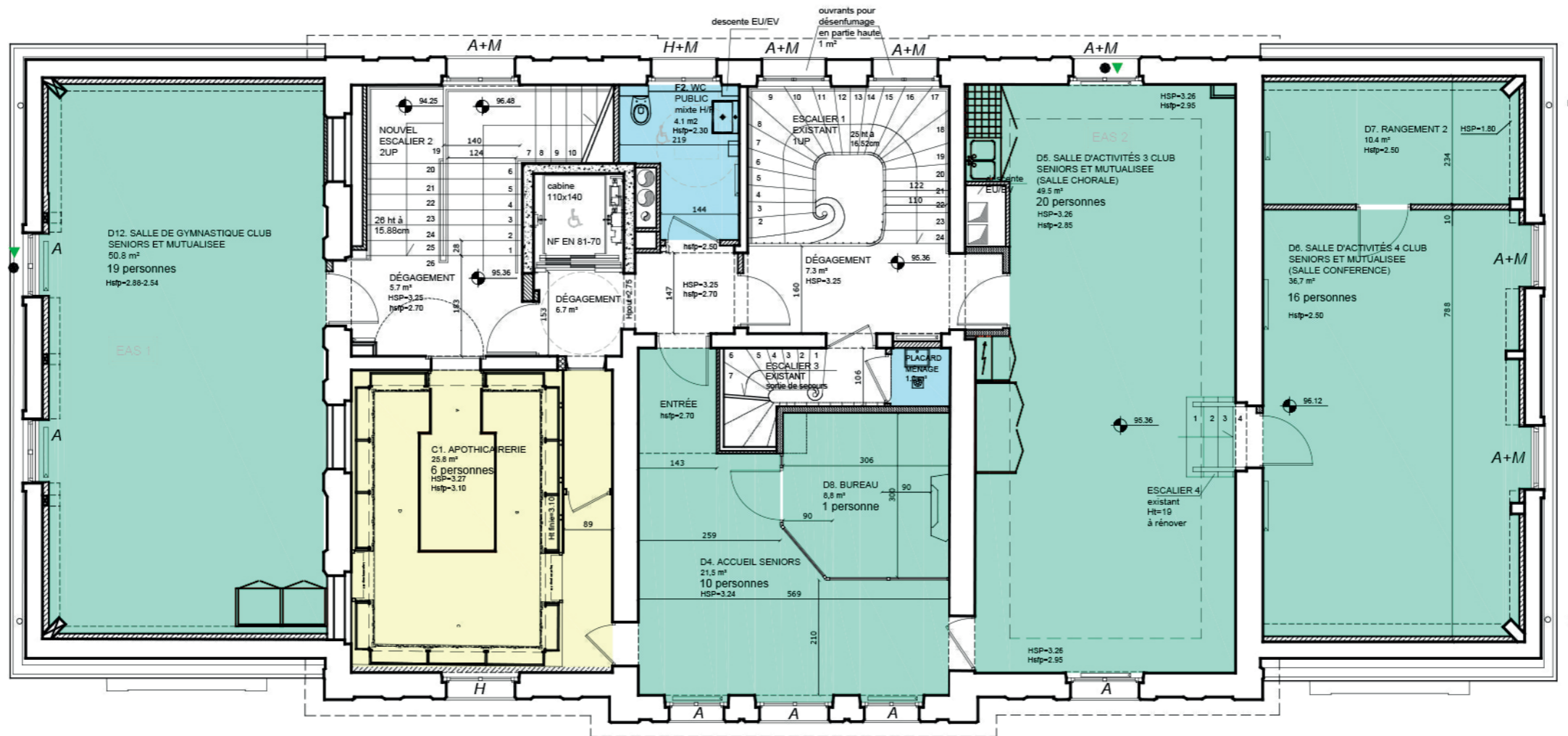
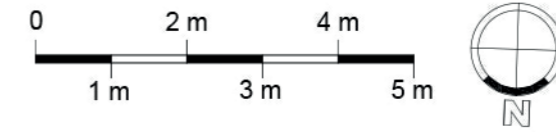
RUE HENRI IV



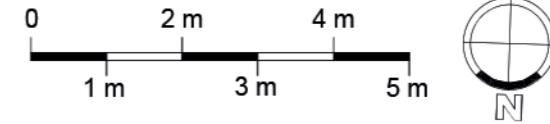
- OFFICE DE TOURISME
- SALLE POLYVALENTE
- SANITAIRES LOCAL MÉNAGE



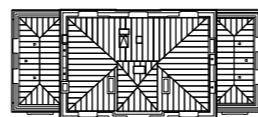
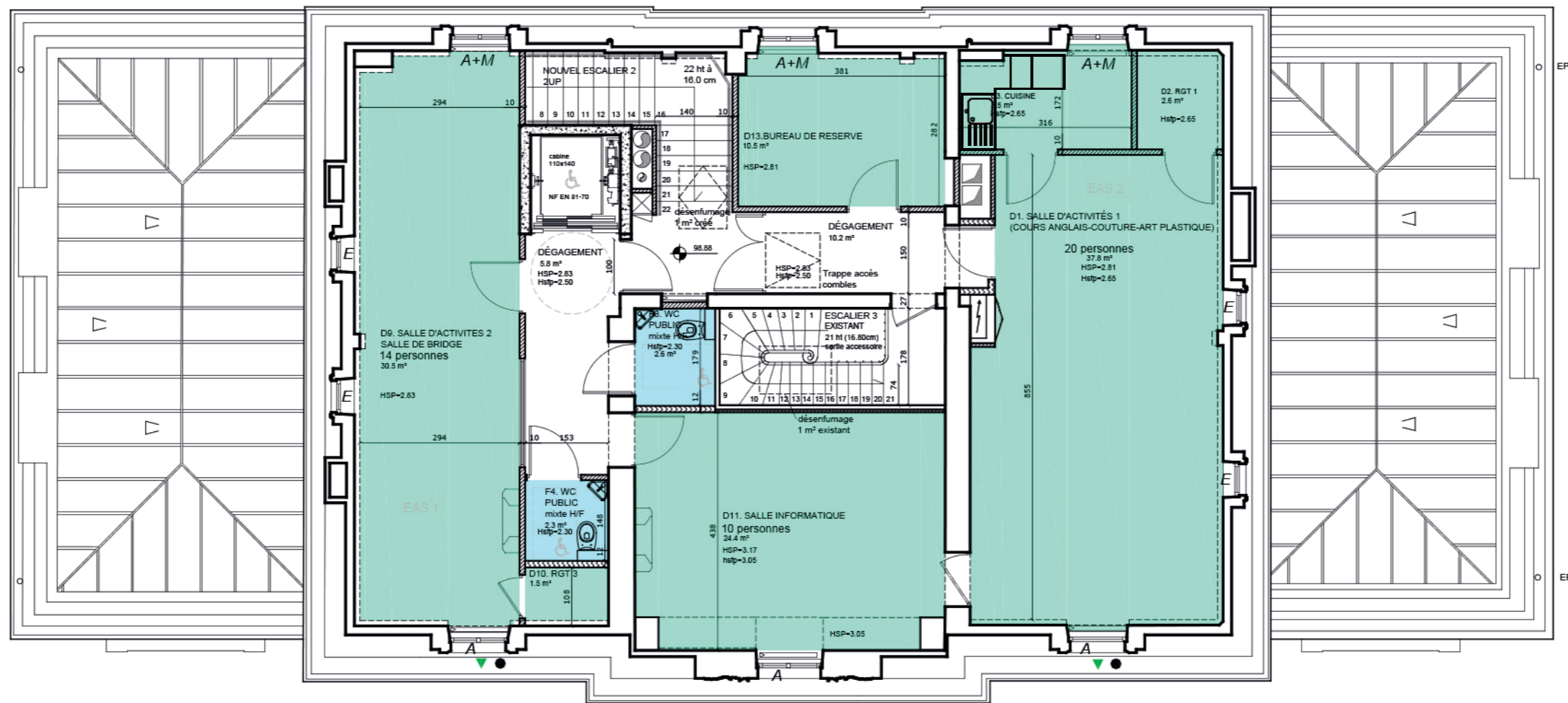
- ESPACE MUSÉOGRAPHIQUE :
APOTHAICARERIE
- FOYER CLUB SENIORS
- SANITAIRES
LOCAL MÉNAGE

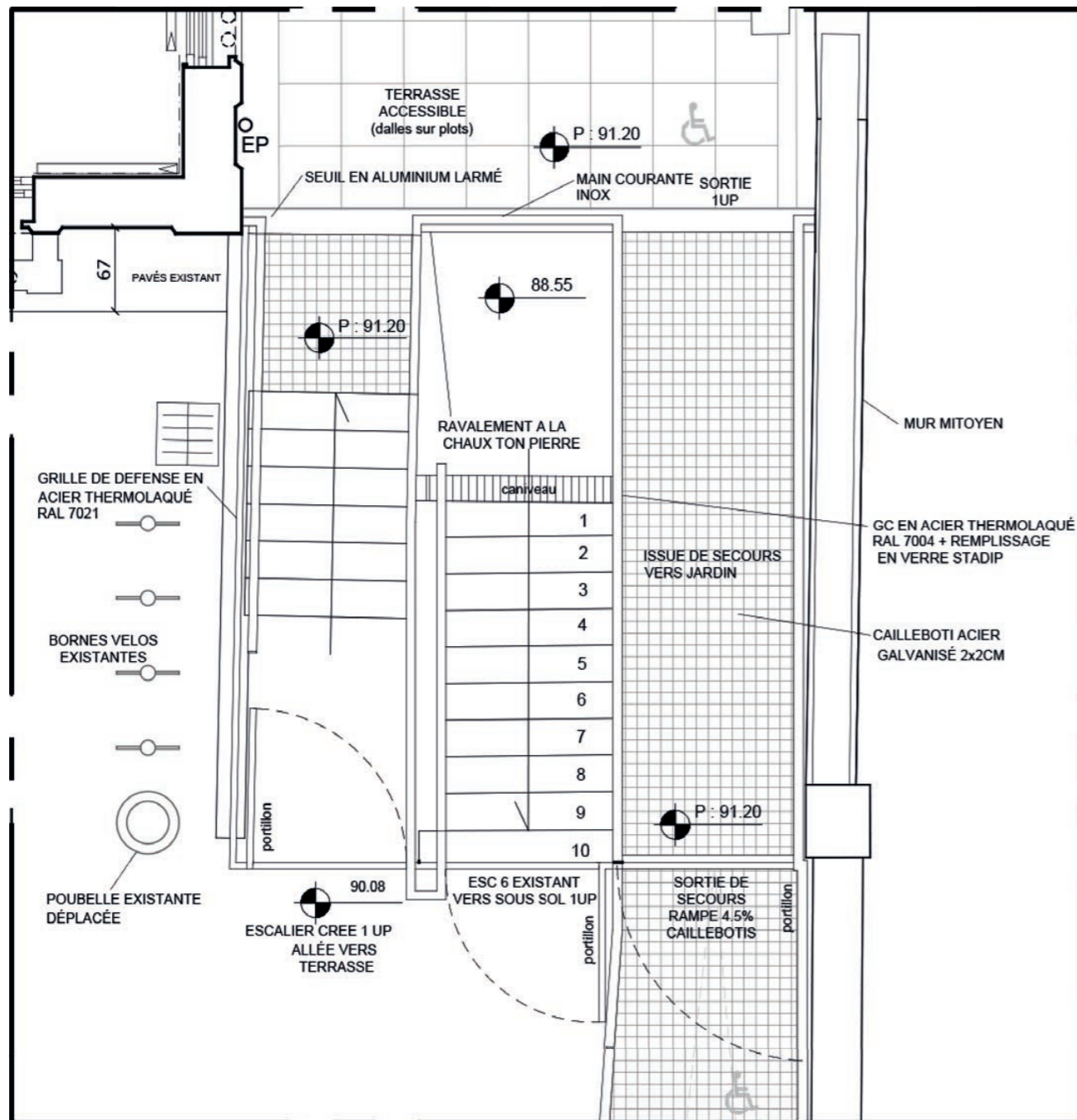


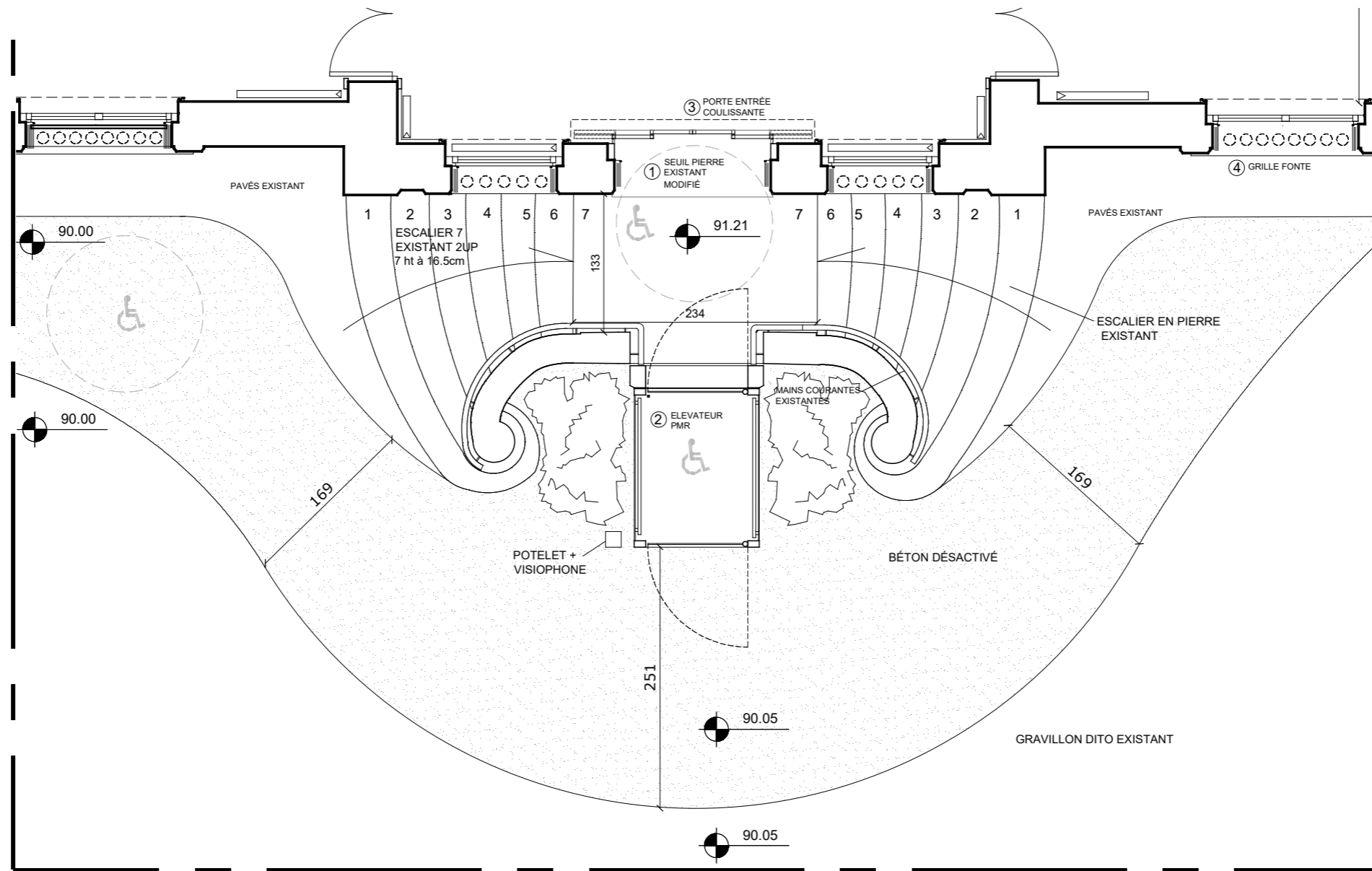
- FOYER CLUB SENIORS
- SANITAIRES LOCAL MÉNAGE

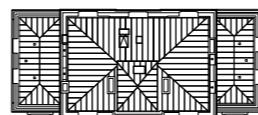
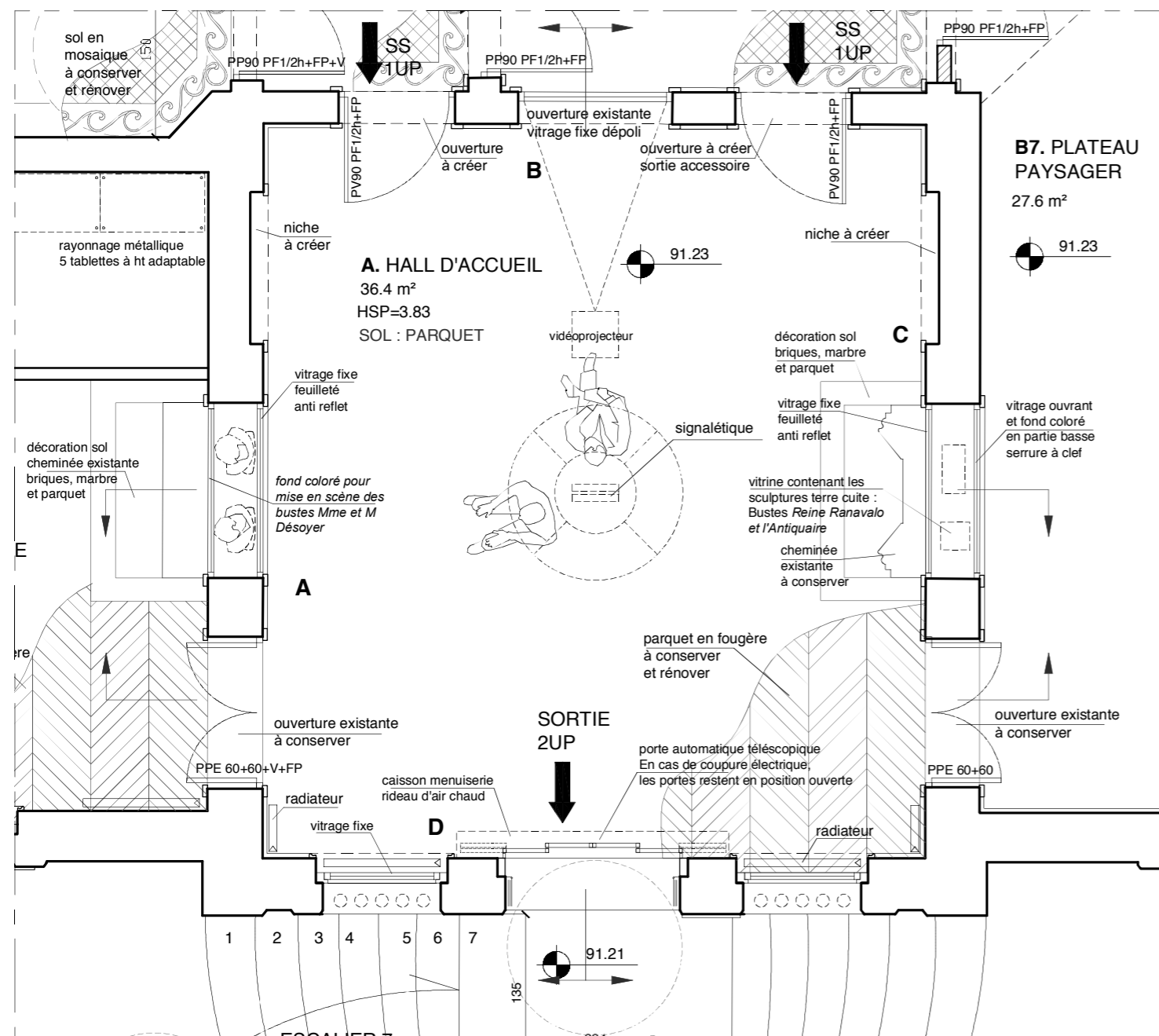
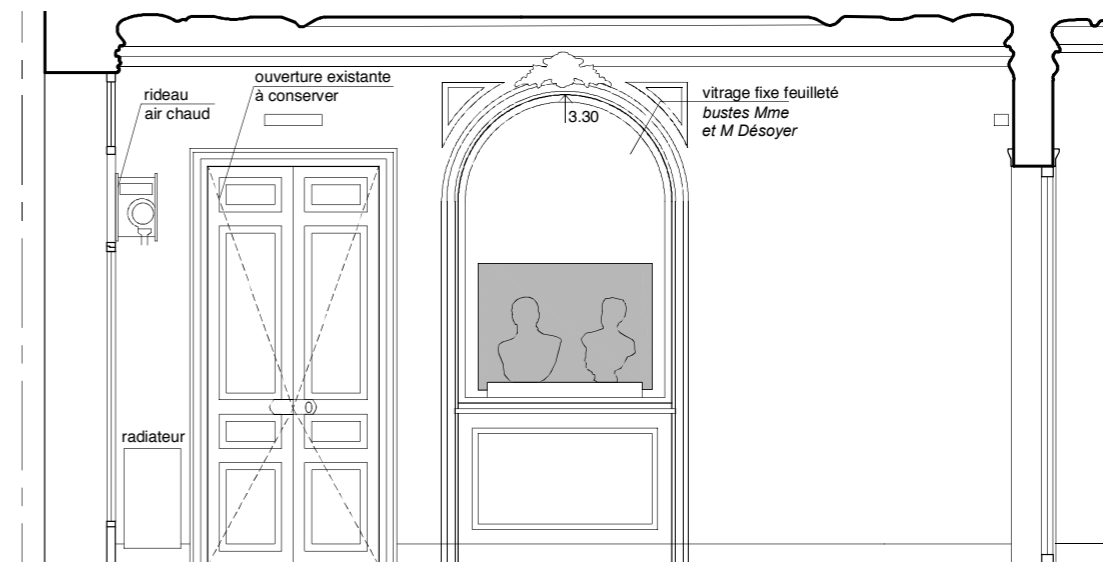
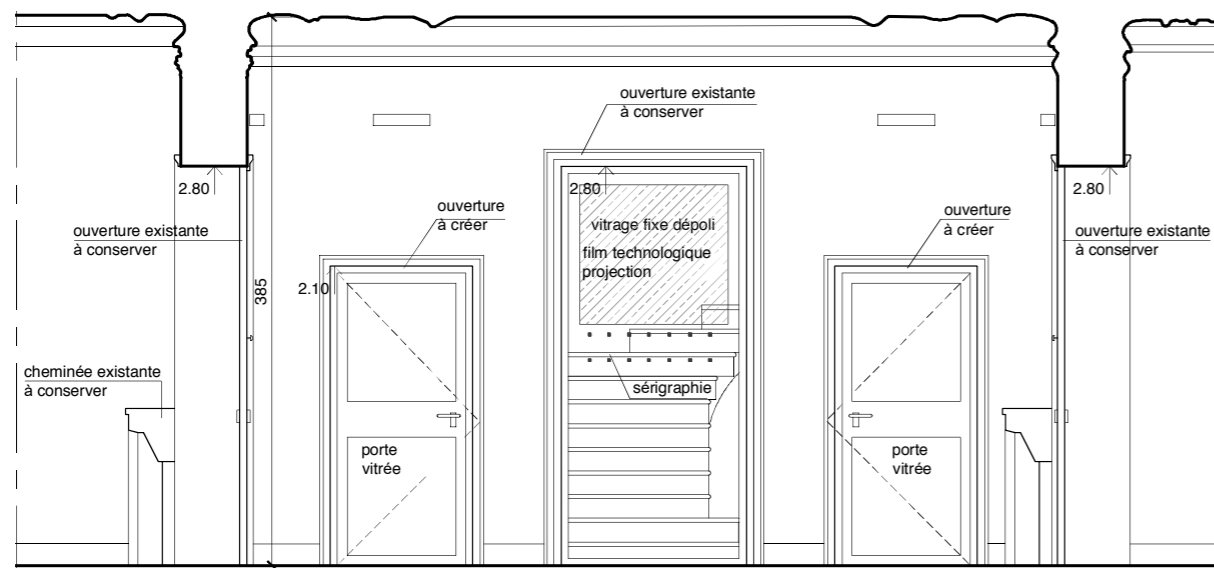


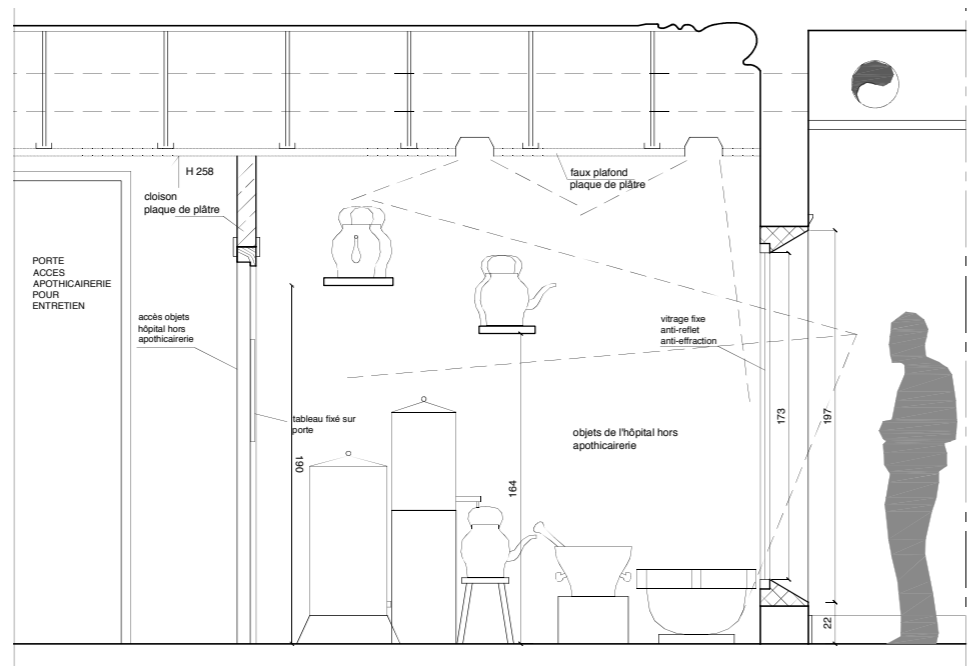
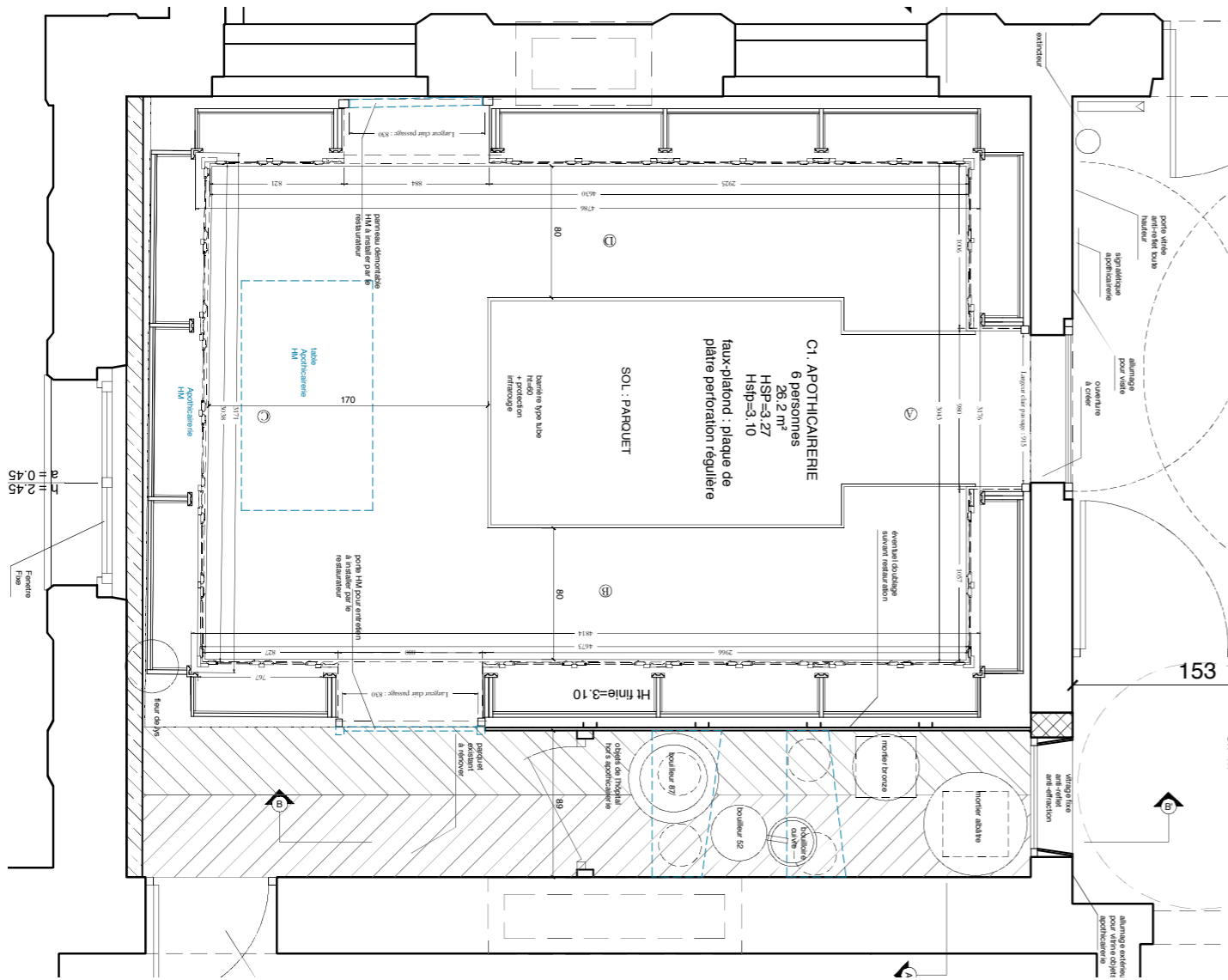
RUE HENRI IV



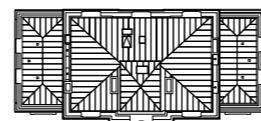


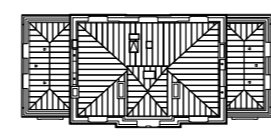
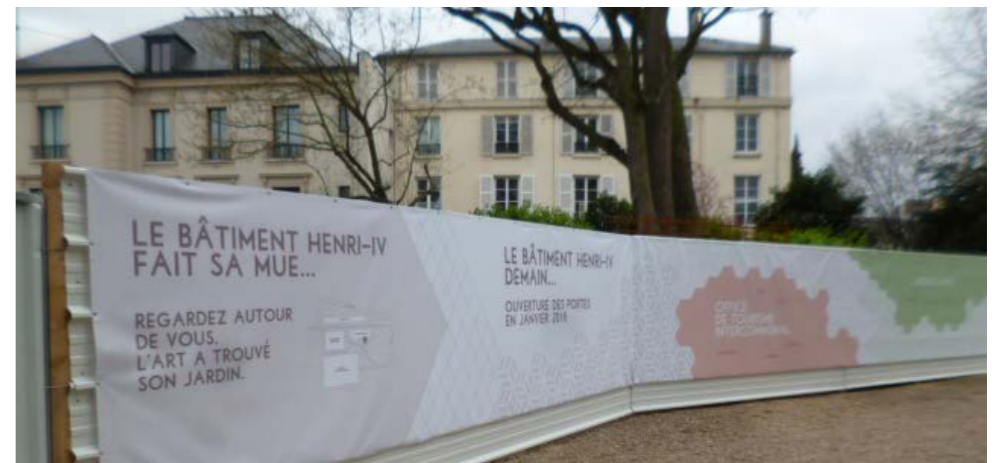




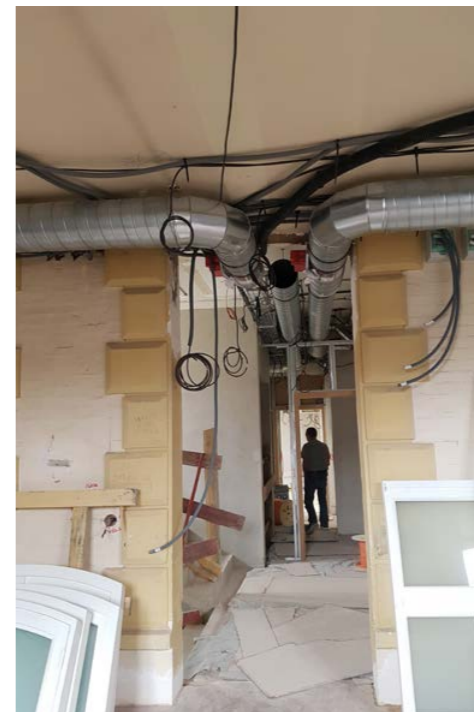


CHANTIER





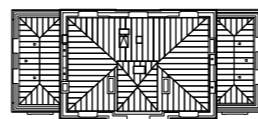


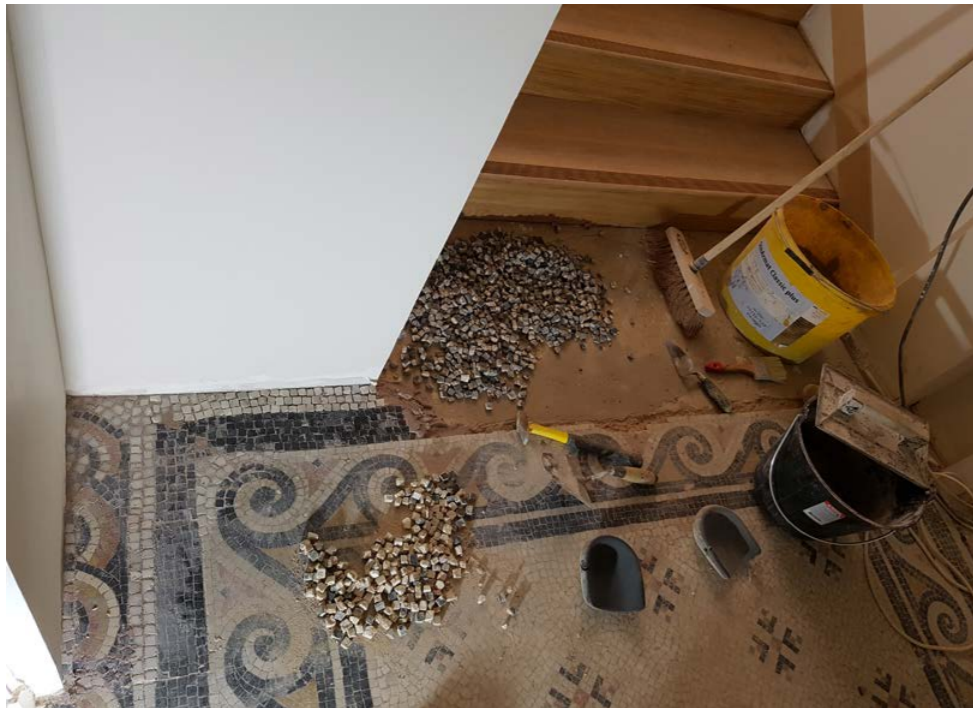


L'optimisation des implantations techniques, notamment le passage des gaines et leur intégration dans le bâtiment a été un des objectifs du projet.

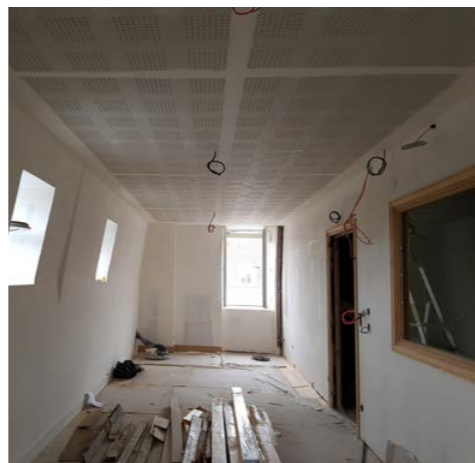
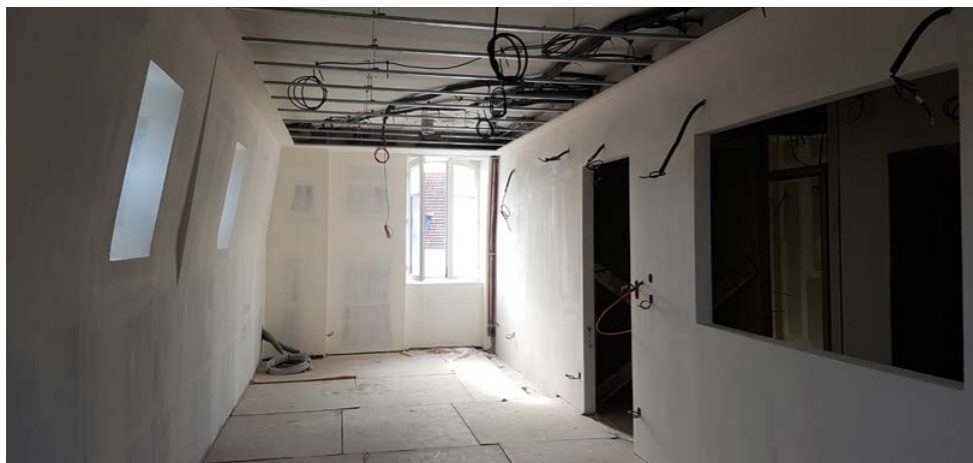
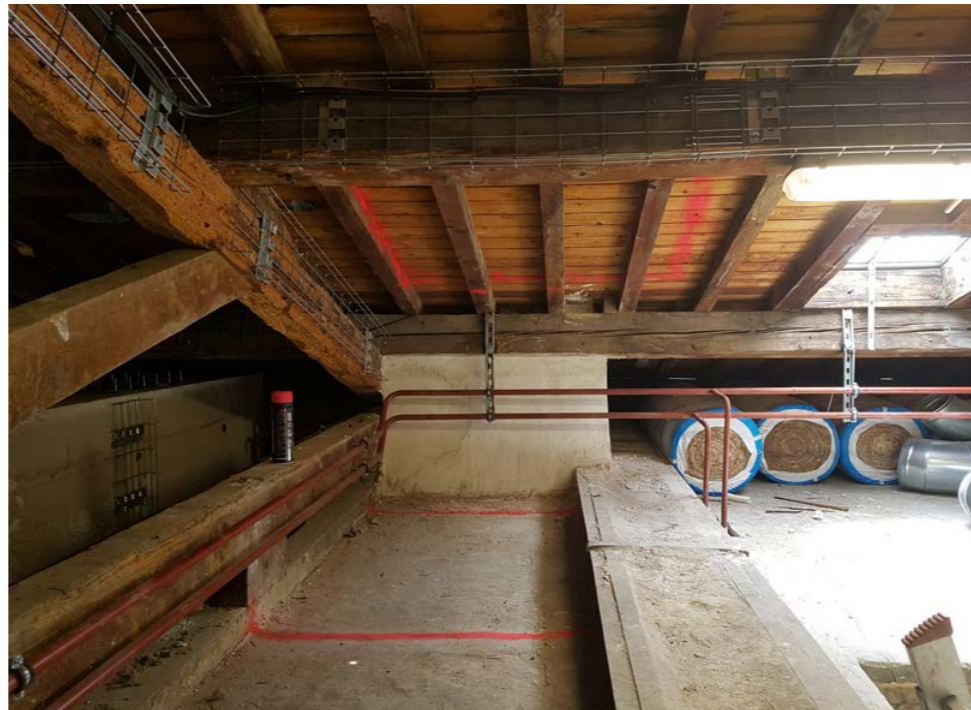
L'exiguité des espaces et la présence de structures du type traditionnel ont constitué une contrainte supplémentaire dont la solution n'était pas toujours facile.

Deux réseaux double flux dont une spécifique pour les réserves d'œuvres d'art.



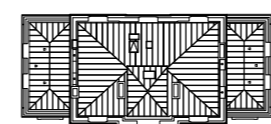






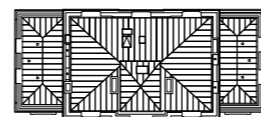
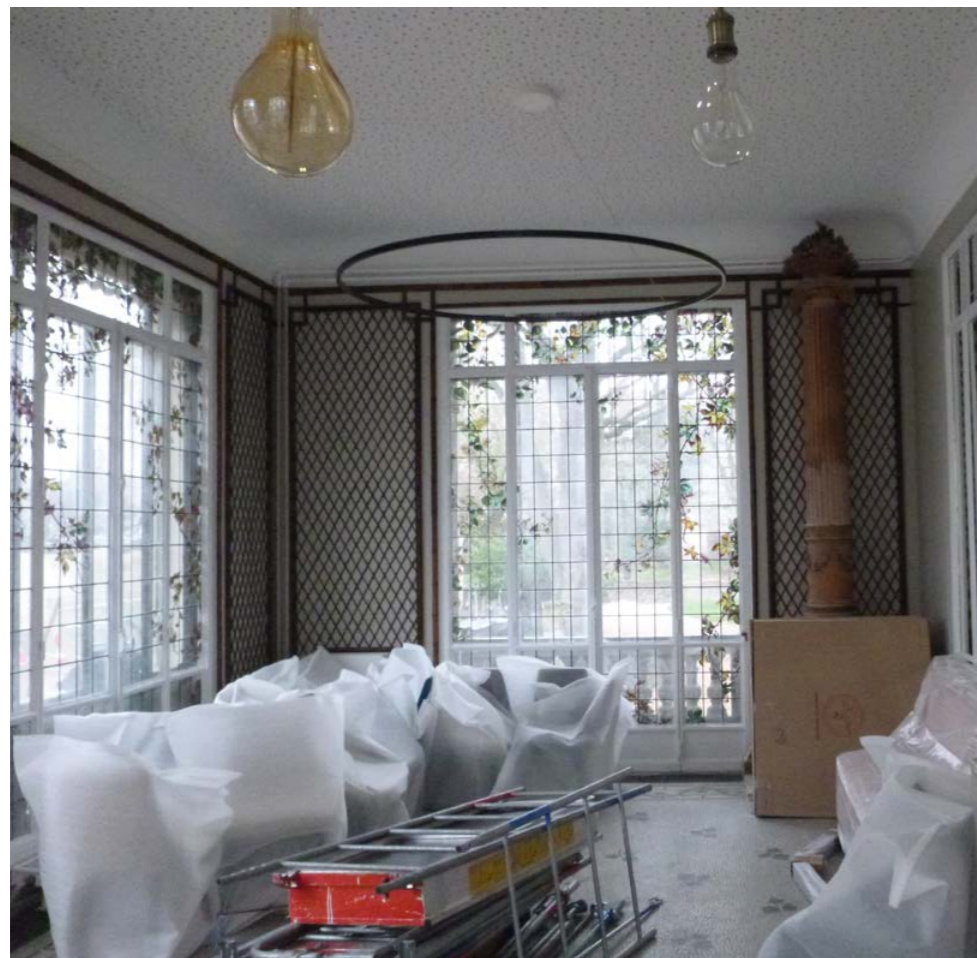
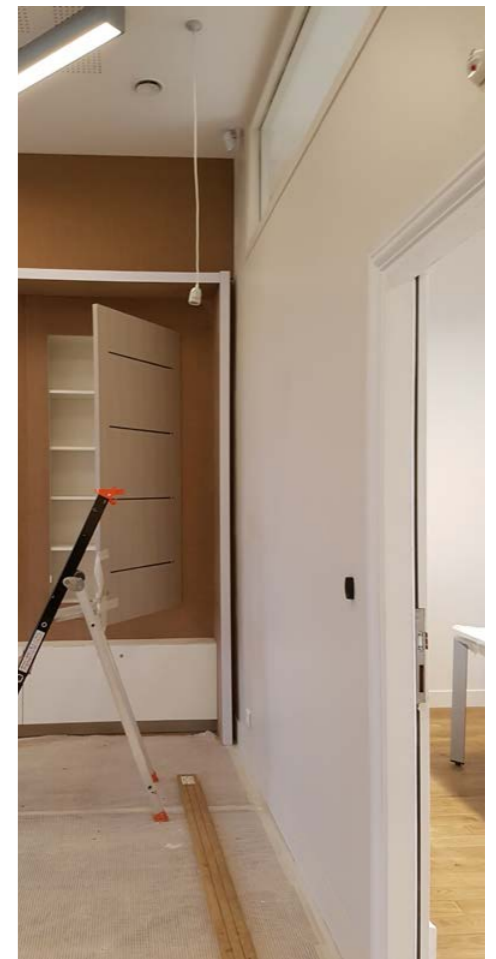
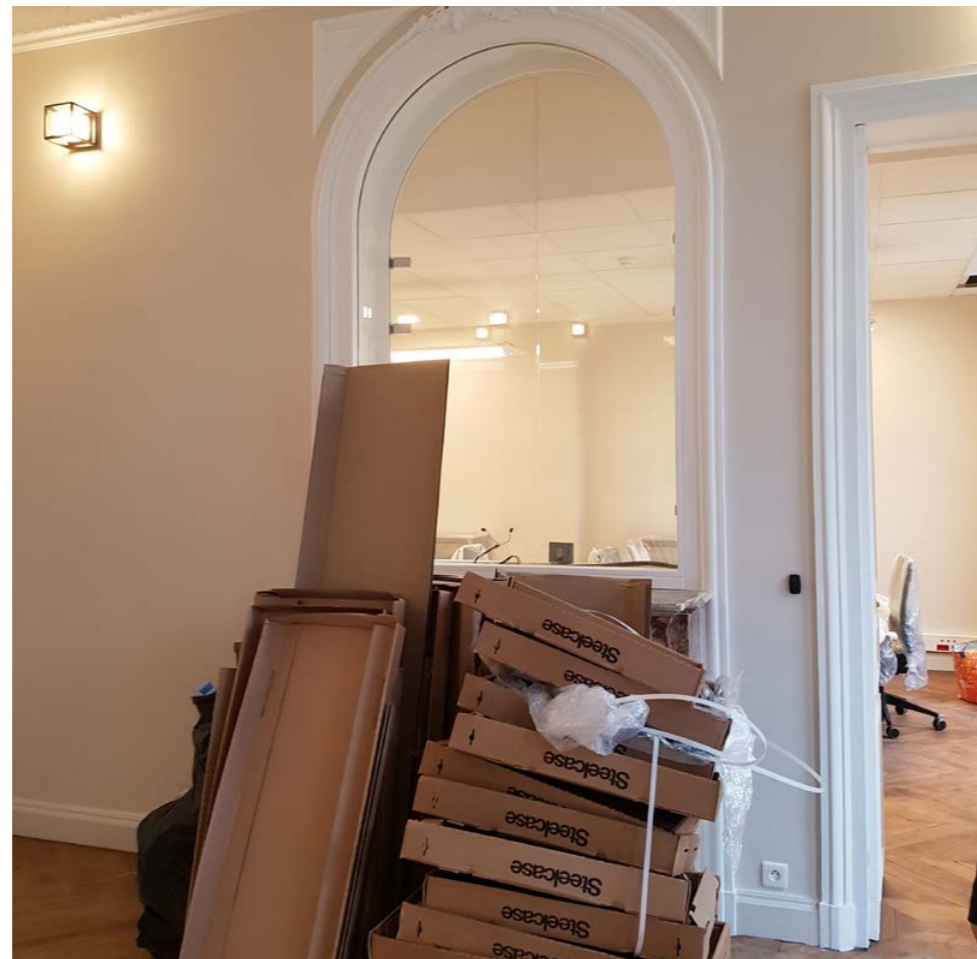


RÉAMÉNAGEMENT DU BÂTIMENT HENRI IV
SAINT GERMAIN EN LAYE
ATELIER FILIPPINI



LES FINITIONS

CHANTIER 24



RÉALISATION

